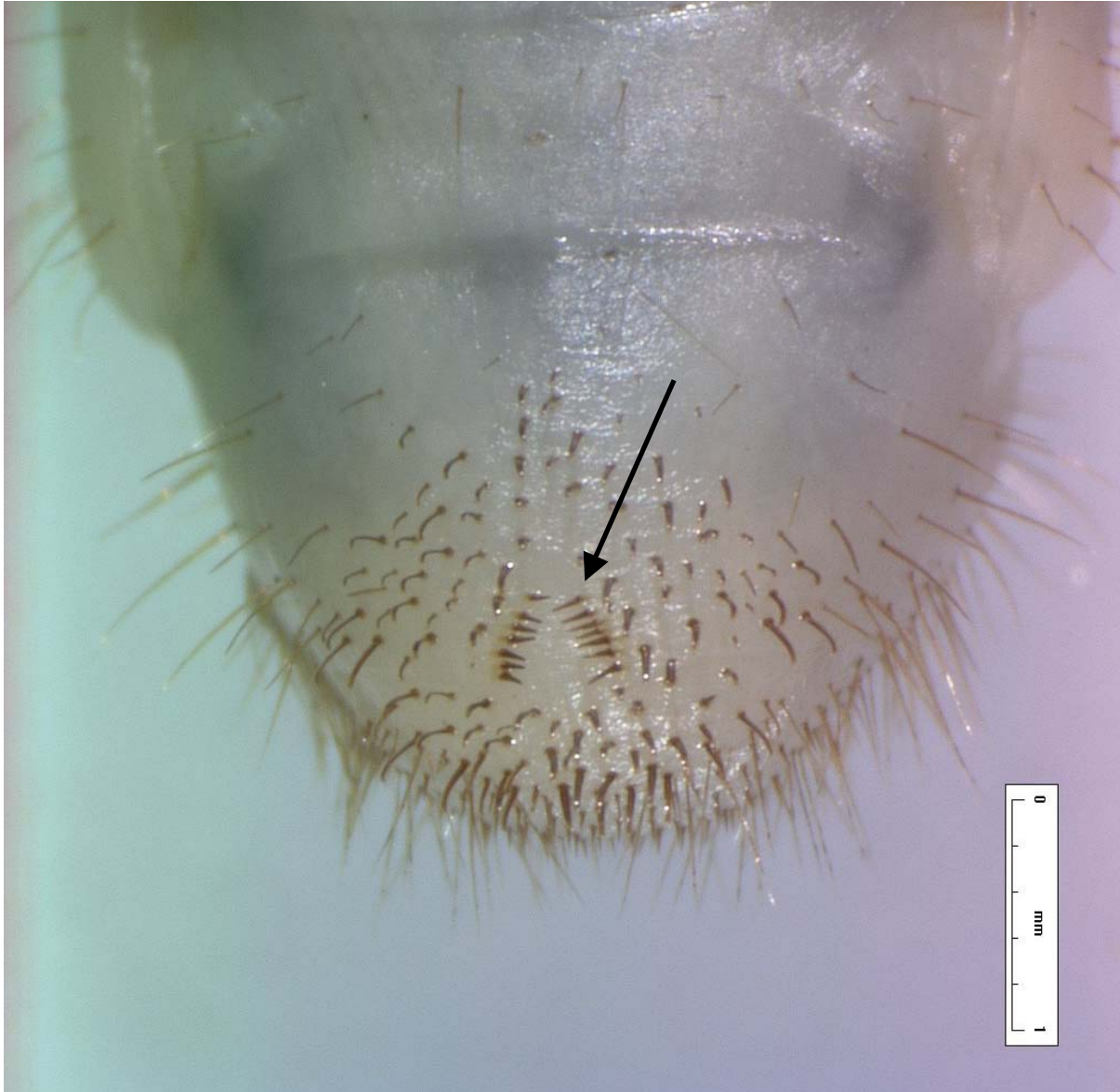




**Web Fig.1:** Third instar larvae.  
(photo Germain LNPV)



**Web Fig.2:** Pygidium with characteristic “V” shape.  
(photo Germain LNPV)



**Web Fig.3: Habitus (male).**  
(photo Germain LNPV)



**Web Fig.4:** Protibial aspect, male pointed, female rounded  
(photos Germain LNPV)



Lateral view



Dorsal view



Ventral view

**Web Fig 5: Male aedeagus**  
(photos Germain LNPV)



**Web Fig. 6 :** Abdomen, lateral view  
(photo Germain LNPV)

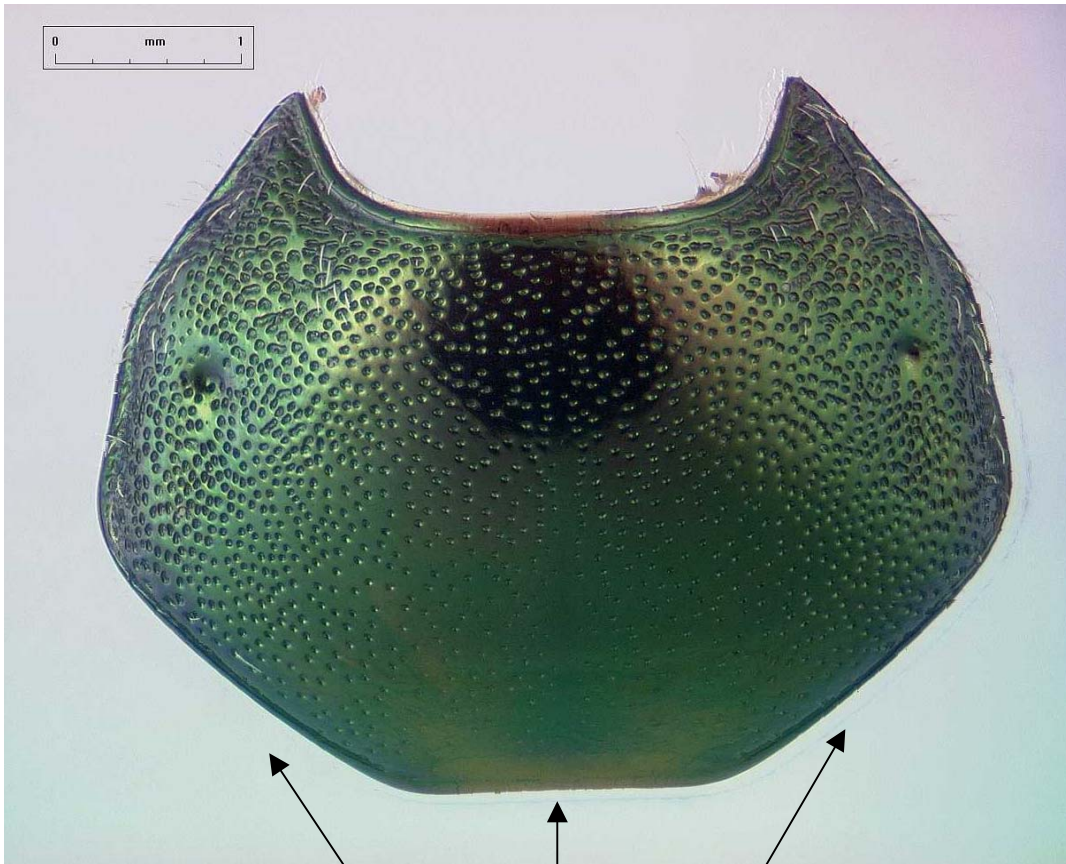


**Web Fig. 7 :** Elytra, membranous border of lateral margin  
(photos Germain LNPV)



**Web Fig. 8** : Lacinia with more than 2 teeth  
(photo Germain LNPV)





Base tri-emarginate

**Web Fig.9:** Pronotum aspect  
(photo Germain LNPV)