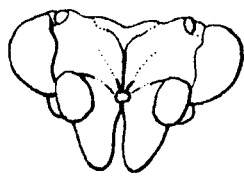


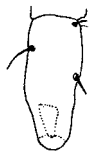
**Web Fig.1.** Triozidae forewing structures, showing vein and cell nomenclature



**Web Fig. 2.** *Trioza erytrae*, head anterior view



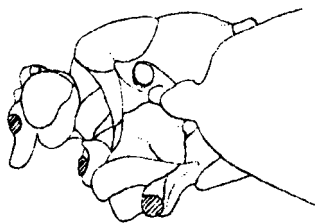
**Web Fig. 3.** *Trioza erytrae*, clypeus lateral view



**Web Fig. 4.** *Trioza erytrae*, ultimate rostral segment



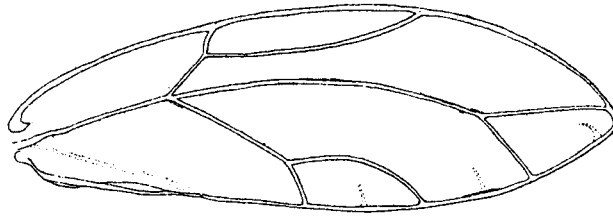
**Web Fig. 5.** *Trioza erytrae*, antenna flagellum



**Web Fig. 6.** *Trioza erytrae*, head and thorax, lateral view



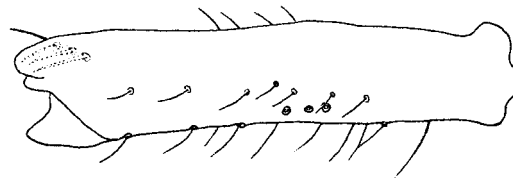
**Web Fig. 7.** *Trioza erytrae*, mesopraescutum, dorsal view



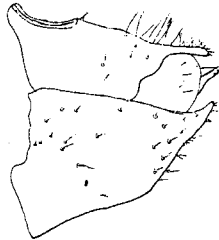
**Web Fig. 8.** *Trioza erytreae*, forewing



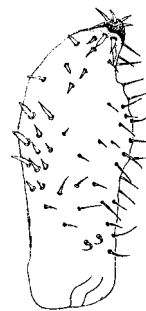
**Web Fig. 9.** *Trioza erytreae*, apex of hind tibia



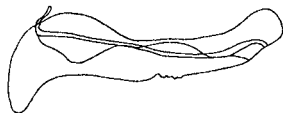
**Web Fig. 10.** *Trioza erytreae*, hind tibia, posteroventral view



**Web Fig. 11.** *Trioza erytreae*, female genital plate



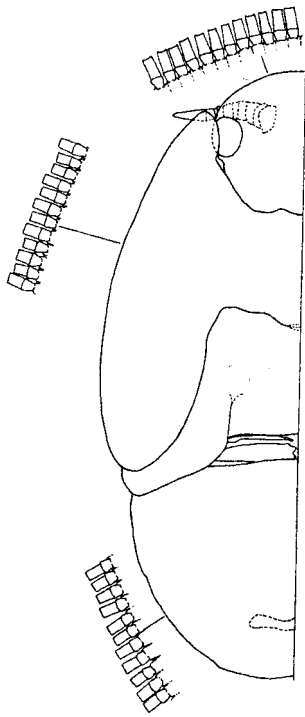
**Web Fig. 12.** *Trioza erytreae*, paramere



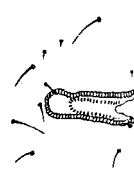
**Web Fig. 13.** *Trioza erytreae*, apical segment of aedeagus



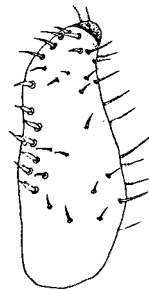
**Web Fig. 14.** *Trioza erytreae*, proctiger lateral view



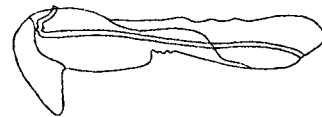
**Web Fig. 15.** *Trioza erytrae*, fifth-larva instar



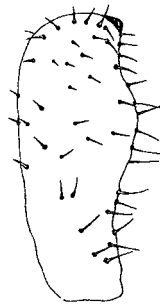
**Web Fig. 16.** *Trioza erytrae*, anal-pore area



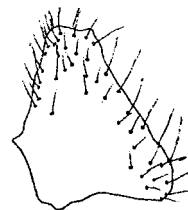
**Web Fig. 17.** *Trioza gregoryi*, paramere



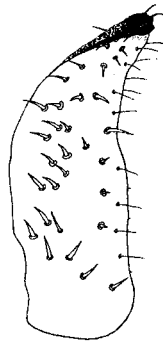
**Web Fig. 18.** *Trioza gregoryi*, apical segment of aedeagus



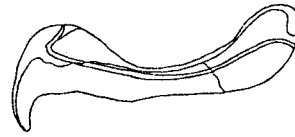
**Web Fig. 19.** *Trioza kilimanjarica*, paramere



**Web Fig. 20.** *Trioza carvalhoi*, female genital plate



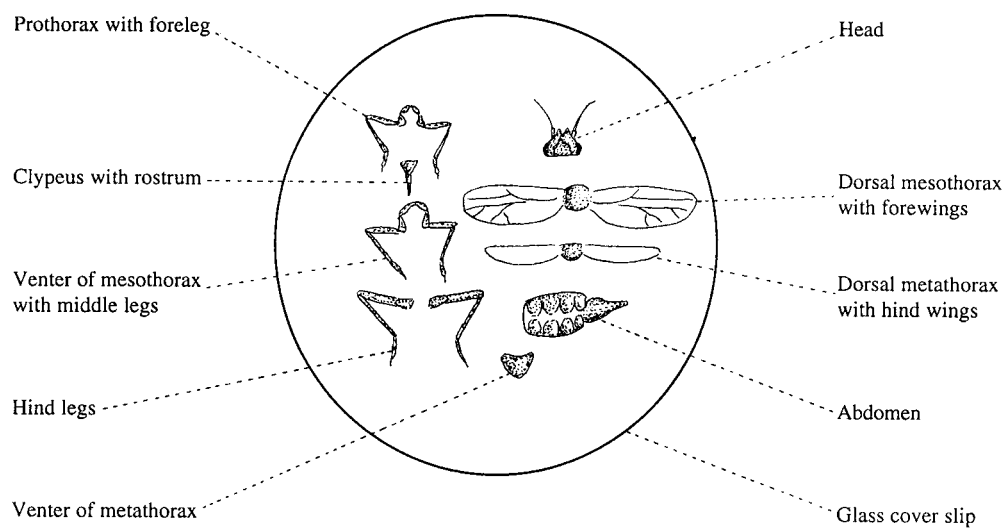
**Web Fig. 21.** *Trioza carvalhoi*, paramere



**Web Fig. 22.** *Trioza carvalhoi*, apical segment of aedeagus



**Web Fig. 23.** *Trioza eafra*, paramere



**Web Fig. 24.** Arrangement of dissected psyllid adult on a microscope slide