

INSTRUCTIONS FOR NPPOs



What can be modified in the poster?

Computer files for the poster (InDesign format + fonts) and leaflet (Word format) were sent to all NPPOs of EPPO member countries in May 2013. Please contact the EPPO Secretariat, if you need these files again.

When translating the poster into national languages, efforts should be made to avoid serious alterations of its visual appearance and main message. However, it is fully acknowledged that this might be a challenge for translators.

DON'T RISK IT!

**Pests and diseases can hide on plants.
Please do not bring home plants,
seeds, fruit, vegetables or flowers.**

This poster was prepared by the European and Mediterranean Plant Protection Organization (EPPO) - www.eppo.int
in collaboration with Dr David Dawson (Paris, GB) - Design Animatec Ray (FR)

This can be translated if needed (necessary fonts* were provided in the file package).

Please do NOT modify this image (the four red corners should also remain on the poster).

This can be translated if needed (necessary fonts* were provided in the file package).

If you wish, you can use this space to add specific logos, contact details and a QR Code (for mobile phones). The existing QR Code leads to an EPPO webpage (optimized for mobile phones): www.eppo.int/PUBLICATIONS/poster_test.htm
The EPPO QR Code can be kept if you do not wish to design your own QR Code and associated webpage.

Please do NOT modify the acknowledgments. The EPPO logo can be resized/moved a little (for practical reasons) but should remain at the bottom of the poster.

* Please note that fonts provided by the EPPO Secretariat (Aller, Old Typography and Univers) include only Latin characters. For other types of alphabet (e.g. Arabic, Cyrillic, Greek, Hebrew), NPPOs will have to find similar fonts.

What can be modified in the leaflet?

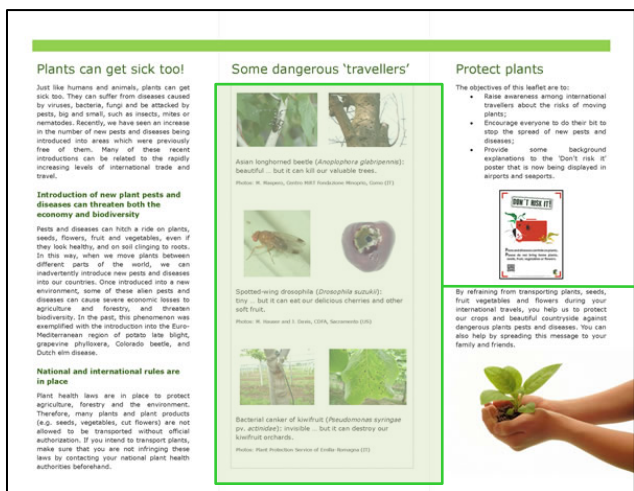
All texts appearing in the leaflet can be translated but should be kept as close as possible to the message that is conveyed by the English text. Unlike the poster, countries can use another visual design in the leaflet (e.g. other colours, backgrounds, decorative elements), but without altering its general structure (e.g. image of the poster on the cover, detailed explanations inside).



If you have translated the poster, you may wish to include here an updated image of it.

In this area, you can add your logos and contact details, as well as acknowledgments to all those involved in the preparation of the leaflet.

You can replace the 'bug' icon by the contact details of the local phytosanitary authorities that can be contacted by passengers when they want to bring in plants



You can choose other examples/pictures of pests that are of particular concern to your country.