



**Webfig. 1.** Bleeding canker on oak



**Webfig. 2.** Canker on *Quercus rubra*.



**Webfig. 3.** Canker on *Quercus falcata*.



**Webfig. 4.** Oak – dead tree.



**Webfig 5.** *Rhododendron* shoot canker.



**Webfig. 6.** *Rhododendron* shoot tip wilt.



**Webfig.7.** *Rhododendron* leaf necrosis of midrib from petiole.



**Webfig. 8.** *Viburnum* stem base discoloration.



**Webfig 9.** *Viburnum* - leaf blight.



**Webfig. 10.** *Pieris* - leaf blight.



**Webfig. 11.** *Syringa* – leaf blight.



**Webfig. 12.** *Kalmia latifolia* – leaf blight.



**Webfig. 13.** *Camellia* – leaf blight.



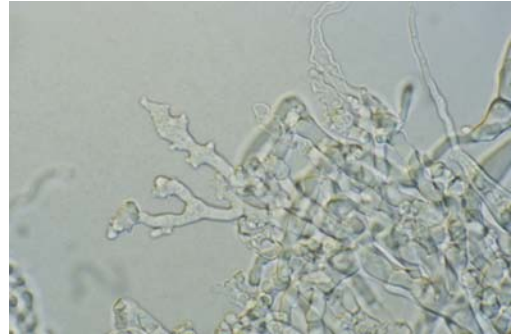
**Webfig. 14.** *Leucothoe* – leaf blight.



**Webfig. 15.** *Taxus* – needle dieback.



**Webfig. 16.** Typical slow growing colony on a selective medium P<sub>5</sub>ARP(H)



**Webfig. 17.** Typical coraloid mycelium on a selective medium P<sub>5</sub>ARP(H)



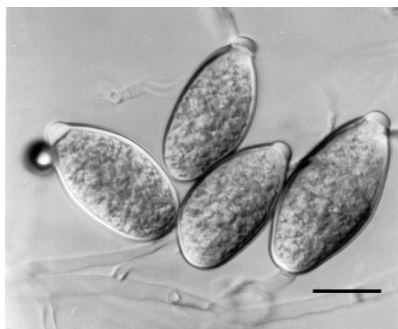
**Webfig. 18.** Sporangia on a selective medium P<sub>5</sub>ARP(H)



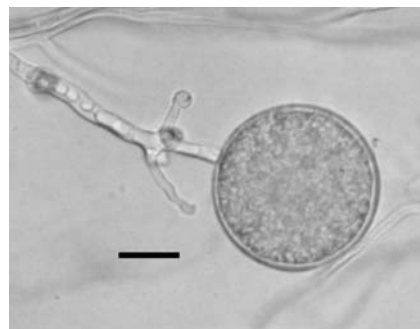
**Webfig. 19.** Chlamyospore on a selective medium P<sub>5</sub>ARP(H)



**Webfig. 20.** Typical outgrowth of colony on a non-selective medium (CPA)



**Webfig 21.** Sporangia (bar = 20 μm) on a non-selective medium (CPA)



**Webfig. 22.** Chlamyospore (bar = 20 μm) on a non-selective medium (CPA)